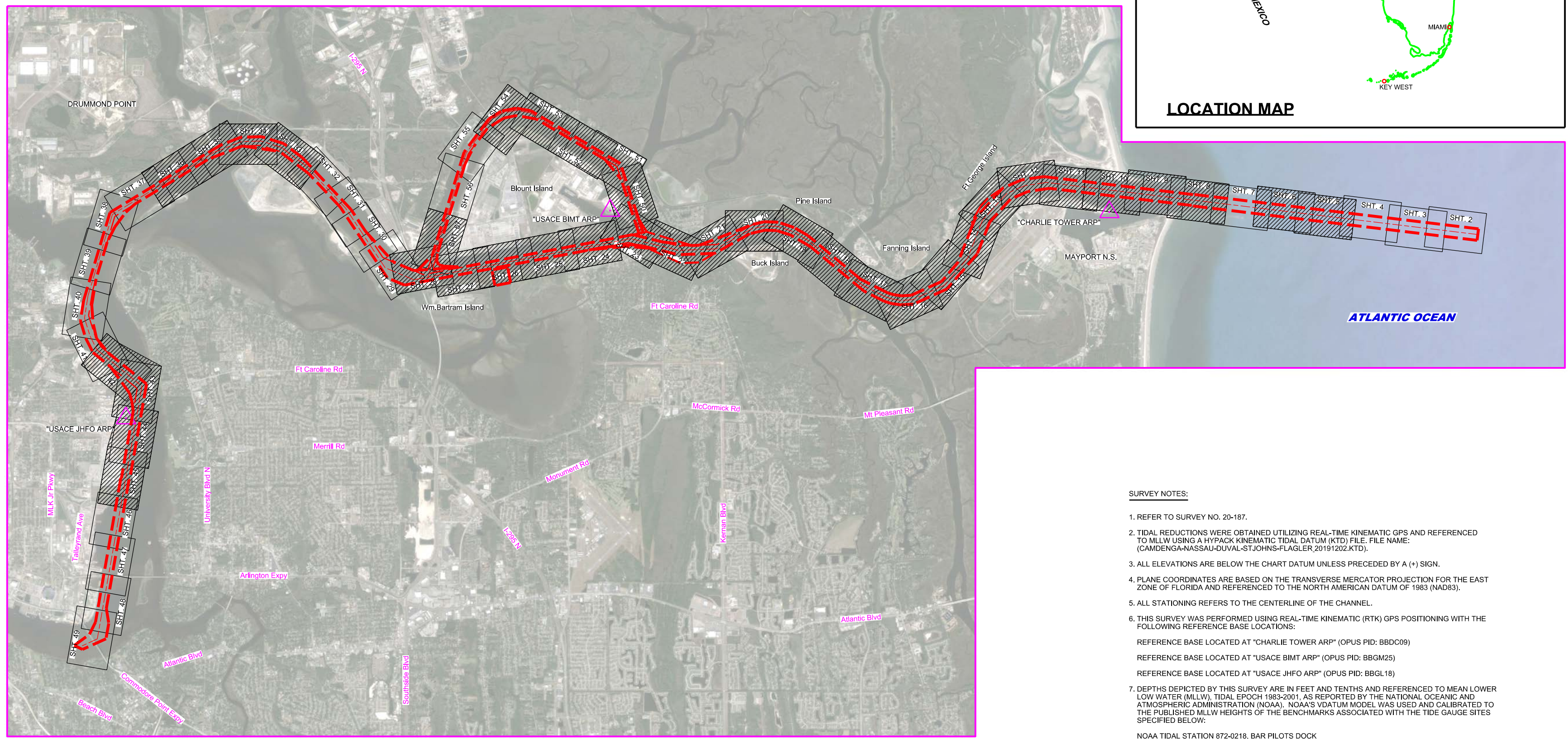
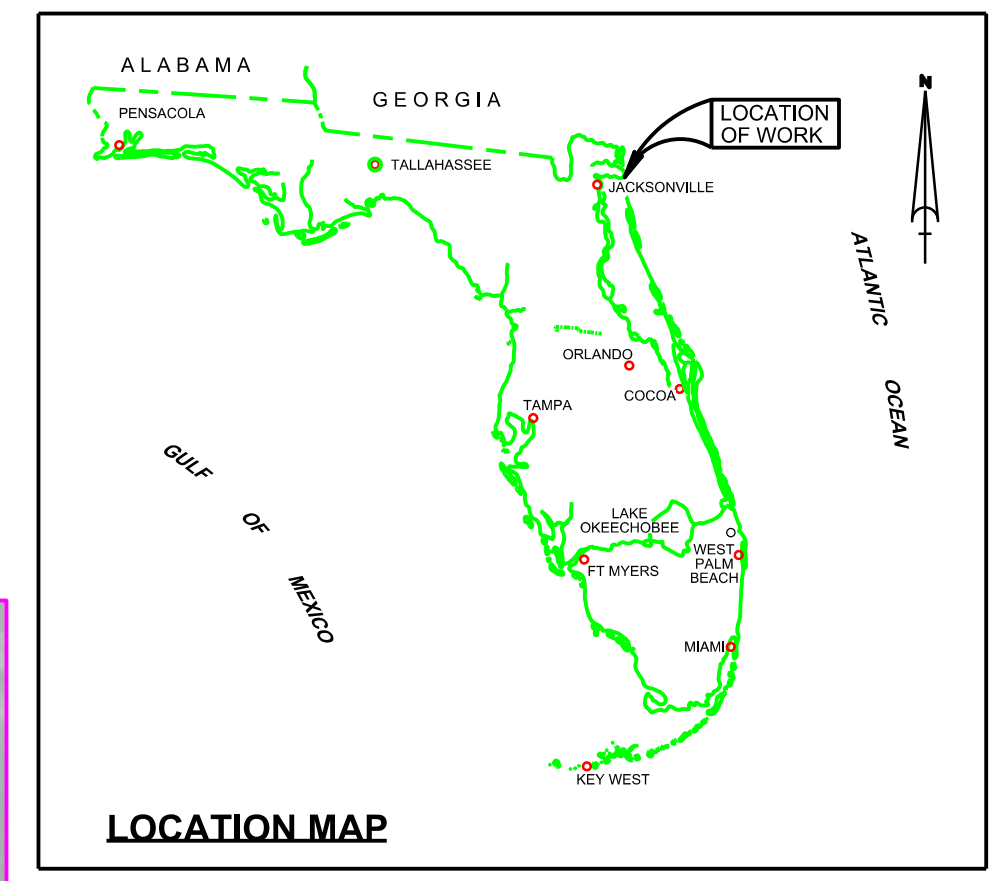


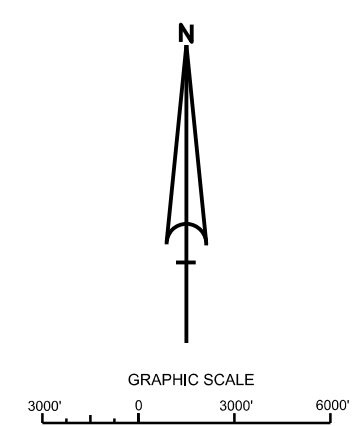
JACKSONVILLE HARBOR, FLORIDA 3rd QUARTER EXAM SURVEY FY20 30, 34, 38, 40 & 42-FOOT PROJECT



SURVEY NOTES:

- REFER TO SURVEY NO. 20-187.
 - TIDAL REDUCTIONS WERE OBTAINED UTILIZING REAL-TIME KINEMATIC GPS AND REFERENCED TO MLLW USING A HYPACK KINEMATIC TIDAL DATUM (KTD) FILE. FILE NAME: (CAMDENGGA-NASSAU-DUVAL-ST.JOHNS-FLAGLER 20191202.KTD).
 - ALL ELEVATIONS ARE BELOW THE CHART DATUM UNLESS PRECEDED BY A (+) SIGN.
 - PLANE COORDINATES ARE BASED ON THE TRANSVERSE MERCATOR PROJECTION FOR THE EAST ZONE OF FLORIDA AND REFERENCED TO THE NORTH AMERICAN DATUM OF 1983 (NAD83).
 - ALL STATIONING REFERS TO THE CENTERLINE OF THE CHANNEL.
 - THIS SURVEY WAS PERFORMED USING REAL-TIME KINEMATIC (RTK) GPS POSITIONING WITH THE FOLLOWING REFERENCE BASE LOCATIONS:
 REFERENCE BASE LOCATED AT "CHARLIE TOWER ARP" (OPUS PID: BBDC09)
 REFERENCE BASE LOCATED AT "USACE BIMT ARP" (OPUS PID: BBGM25)
 REFERENCE BASE LOCATED AT "USACE JHFO ARP" (OPUS PID: BBGL18)
 - DEPTHS DEPICTED BY THIS SURVEY ARE IN FEET AND TENTHS AND REFERENCED TO MEAN LOWER LOW WATER (MLLW). TIDAL EPOCH 1983-2001, AS REPORTED BY THE NATIONAL OCEANIC AND ATMOSPHERIC ADMINISTRATION (NOAA). NOAA'S DATUM MODEL WAS USED AND CALIBRATED TO THE PUBLISHED MLLW HEIGHTS OF THE BENCHMARKS ASSOCIATED WITH THE TIDE GAUGE SITES SPECIFIED BELOW:
 NOAA TIDAL STATION 872-0218, BAR PILOTS DOCK
 NOAA TIDAL STATION 872-0221, FULTON
 NOAA TIDAL STATION 872-0219, DAMES POINT
 NOAA TIDAL STATION 872-0215, NAVY FUEL DEPOT
 NOAA TIDAL STATION 872-0242, LONG BRANCH
 - VERTICAL MEASUREMENTS WERE MADE USING AN R2 SONIC MODEL 2024 MULTI-BEAM SYSTEM (240 KHZ), A ROSS MODEL 835C SMARTSOUNDER WITH A DUAL-FREQUENCY (28/200 KHZ) SINGLE-BEAM TRANSDUCER AND AN EDGE TECH 8205 MULTI-BEAM/SIDESCAN. ALL SOUNDINGS SHOWN IN HIGH FREQUENCY EXCEPT FOR TERMINAL CHANNEL STATIONS 20+00 THRU 72+00 WHICH ARE IN LOW FREQUENCY (28 KHZ).
- | VESSEL | DATE OF SURVEY | AREA SURVEYED |
|-----------------|----------------|--------------------------------------|
| SV JACKSONVILLE | 12-14 MAY 2020 | PORTION OF BC-3, CUTS 4 - 18 |
| SV JACKSONVILLE | 19 MAY 2020 | CUTS 40, 41, A |
| SV JACKSONVILLE | 20 MAY 2020 | CUTS B, G |
| SV JACKSONVILLE | 21 MAY 2020 | BC-3 STA. 0+00 - 180+00 |
| SV JACKSONVILLE | 27 MAY 2020 | CUT-42 |
| SB-48 | 04 JUN 2020 | CUT-55, TERM. CH. STA. 20+00 - 72+00 |
| SV JACKSONVILLE | 12 JUN 2020 | CUTS 47, 48, 50 |
| SB-36 | 19 JUN 2020 | ADV. MAINTENANCE AREA CUT-42 |
| SB-36 | 29 JUN 2020 | CUT-G |
- AIDS TO NAVIGATION WERE LOCATED FOR THIS SURVEY.
 - THE INFORMATION DEPICTED ON THIS MAP REPRESENTS THE RESULTS OF SURVEYS MADE ON THE DATES INDICATED ABOVE AND CAN ONLY BE CONSIDERED AS INDICATING THE GENERAL CONDITIONS AT THAT TIME. THIS CHART IS SOLELY FOR THE DISTRIBUTION OF AVAILABLE DEPTHS AT THE TIME OF SURVEY.
 - SURVEY ACCURACY STANDARDS, QUALITY CONTROL, AND QUALITY ASSURANCE REQUIREMENTS WERE FOLLOWED DURING THIS SURVEY IN ACCORDANCE WITH USACE EM 1110-2-1003, HYDROGRAPHIC SURVEYING, 30 NOV 2013.

LEGEND	
	MONUMENT
	LIGHTED BEACON
	GREEN DAYBEACON
	RED DAYBEACON
	RED LIGHTED BUOY
	GREEN LIGHTED BUOY
	CAN BUOY
	NUN BUOY
	TIDE STAFF
	PROJECT DEPTH

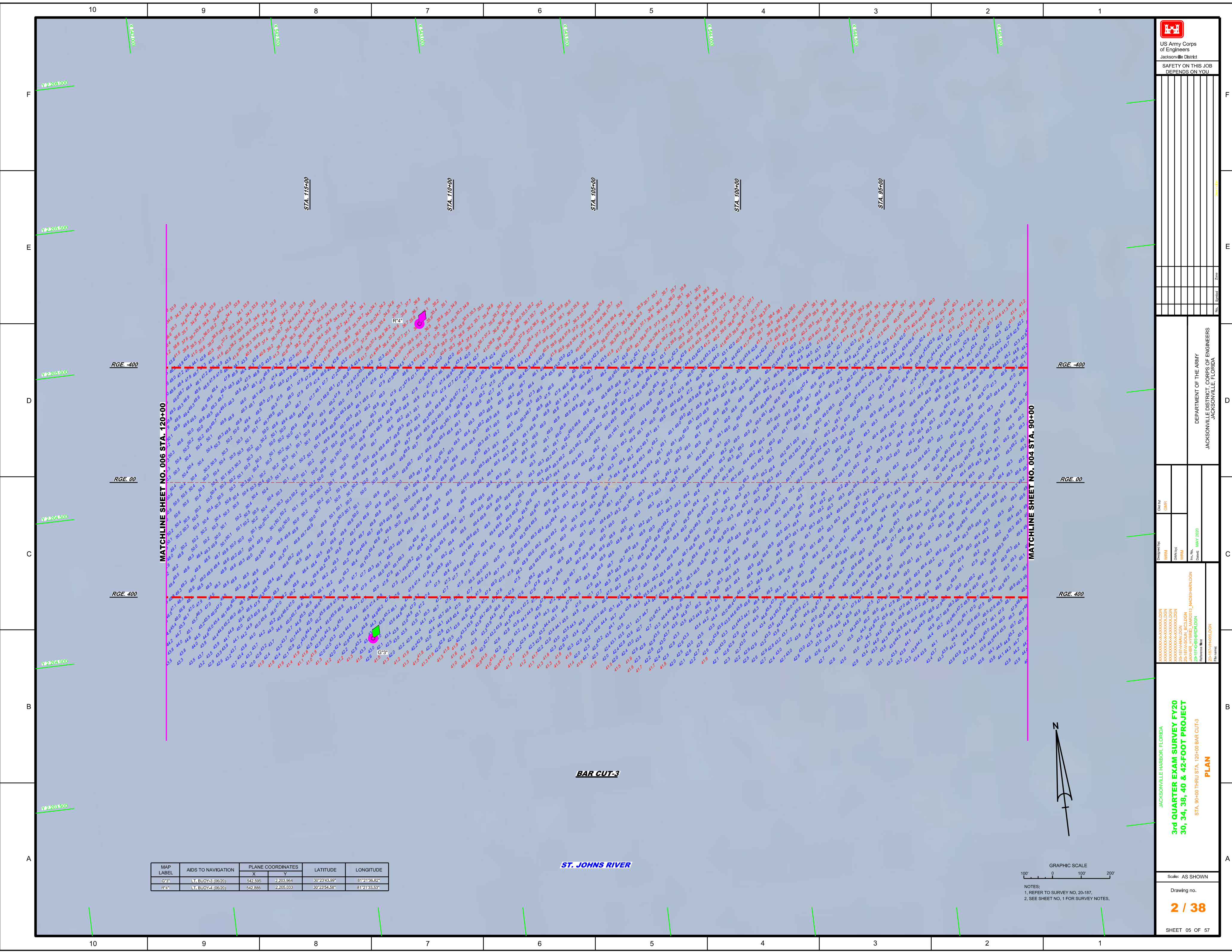


US Army Corps of Engineers
Jacksonville District
SAFETY ON THIS JOB DEPENDS ON YOU

DEPARTMENT OF THE ARMY
JACKSONVILLE DISTRICT, CORPS OF ENGINEERS
JACKSONVILLE, FLORIDA

3rd QUARTER EXAM SURVEY FY20
30, 34, 38, 40 & 42-FOOT PROJECT
INDEX, LOCATION AND VICINITY MAP

Scale: AS SHOWN
Drawing no. 1 / 38
SHEET 01 OF 57



US Army Corps
of Engineers
Jacksonville District

SAFETY ON THIS JOB
DEPENDS ON YOU

REV.	DATE	BY	CHKD.	DESCRIPTION

DESIGNED BY: VRM
CHECKED BY: GHR
DRAWN BY: VRM
DATE: MAY 2020

PROJECT: J-18747-HARBOR-DGN
DRAWING: J-18747-HARBOR-DGN
REVISION: 2-18747-HARBOR-DGN

DATE: MAY 2020

PROJECT: J-18747-HARBOR-DGN
DRAWING: J-18747-HARBOR-DGN
REVISION: 2-18747-HARBOR-DGN

PROJECT: J-18747-HARBOR-DGN
DRAWING: J-18747-HARBOR-DGN
REVISION: 2-18747-HARBOR-DGN

Scale: AS SHOWN
Drawing no. 2 / 38
SHEET 05 OF 57

MAP LABEL	AIDS TO NAVIGATION	PLANE COORDINATES		LATITUDE	LONGITUDE
		X	Y		
G-3*	LT, BUOY-3 (06/20)	542,595	2,203,964	30°23'43.99"	81°21'36.62"
R-4*	LT, BUOY-4 (06/20)	542,886	2,205,033	30°23'54.58"	81°21'33.53"

N
GRAPHIC SCALE
100' 0 100' 200'
NOTES:
1. REFER TO SURVEY NO. 20-187.
2. SEE SHEET NO. 1 FOR SURVEY NOTES.

ST. JOHNS RIVER

BAR CUT-3

MATCHLINE SHEET NO. 006 STA. 120+00

MATCHLINE SHEET NO. 004 STA. 90+00

RGE -400

RGE 00

RGE 400

RGE -400

RGE 00

RGE 400

STA. 116+00

STA. 110+00

STA. 105+00

STA. 100+00

STA. 95+00

F

E

D

C

B

A

F

FT

D

C

B

A

10

9

8

7

6

5

4

3

2

1

10

9

8

7

6

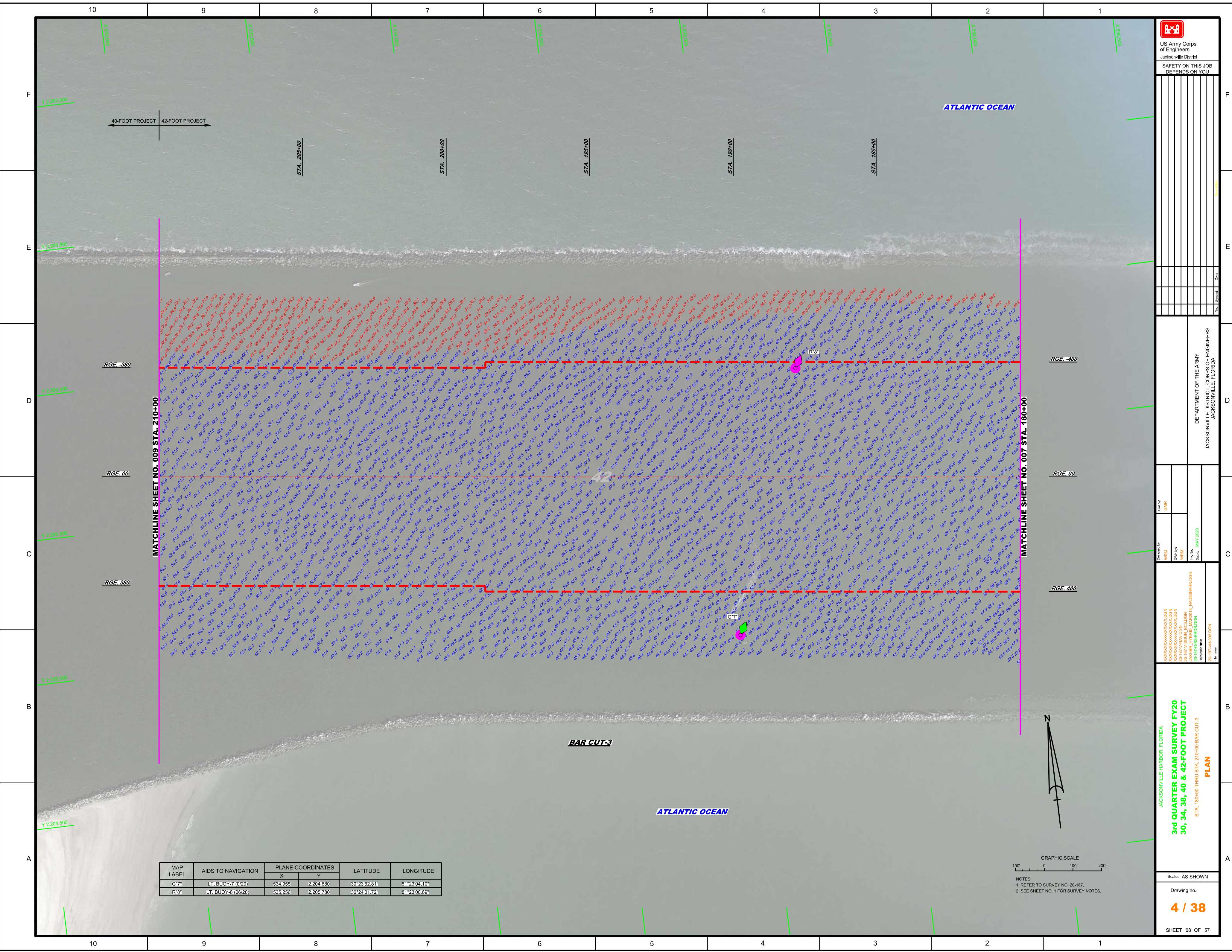
5

4

3

2

1



DEPARTMENT OF THE ARMY
JACKSONVILLE DISTRICT, CORPS OF ENGINEERS
JACKSONVILLE, FLORIDA

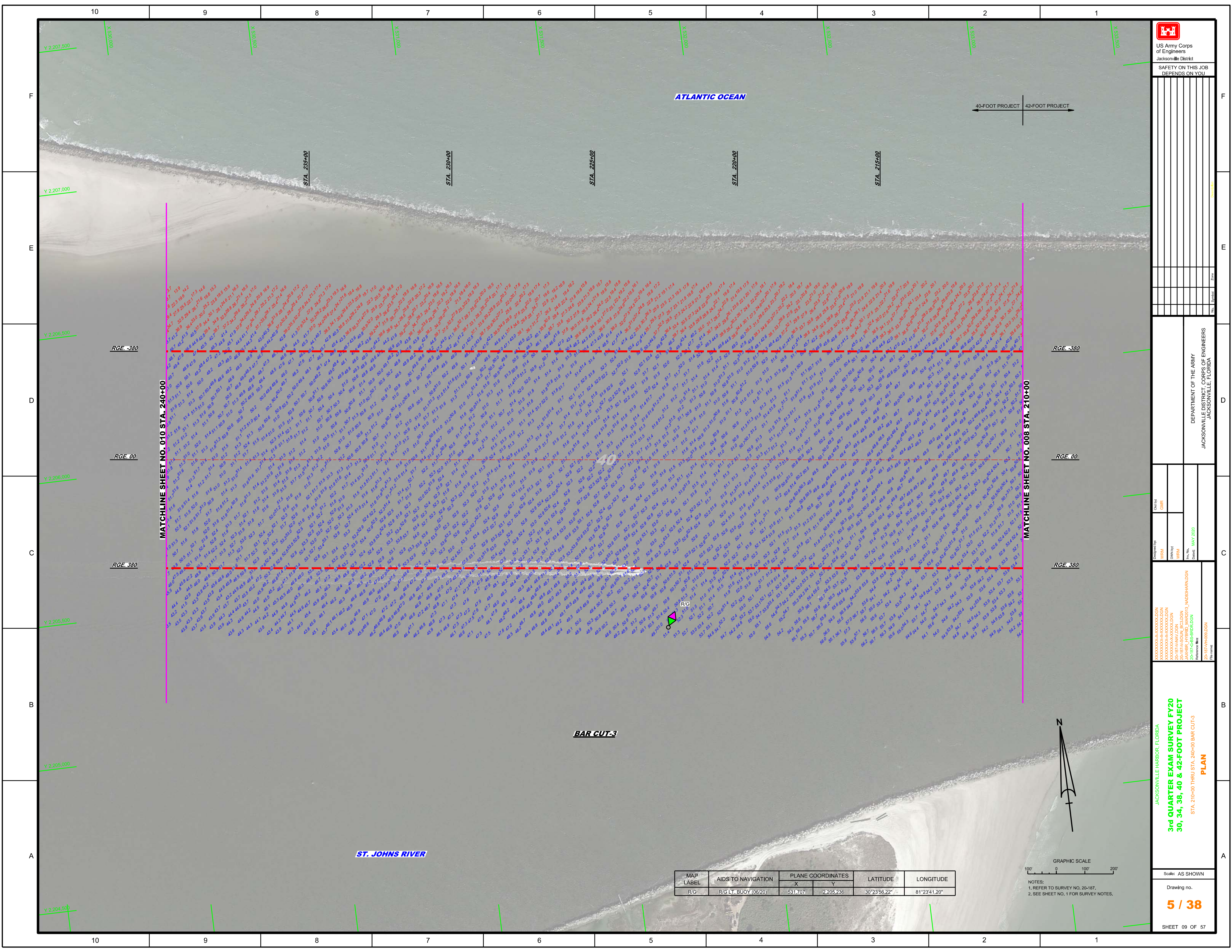
Drawn by: GHR
Checked by: GHR
Designed by: WRM
Scale: AS SHOWN
Date: MAY 2020

JACKSONVILLE HARBOR, FLORIDA
3rd QUARTER EXAM SURVEY FY20
30, 34, 38, 40 & 42-FOOT PROJECT
STA. 190+00 THRU STA. 210+00 BAR CUT-3
PLAN
SHEET 08 OF 57

MAP LABEL	AIDS TO NAVIGATION	PLANE COORDINATES		LATITUDE	LONGITUDE
		X	Y		
G7*	LT. BUOY-7 (0/20)	534,855	2,204,880	30°23'52.81"	81°23'00.60"
R8*	LT. BUOY-8 (0/20)	535,256	2,205,780	30°24'01.72"	81°23'00.60"



NOTES:
1. REFER TO SURVEY NO. 20-187.
2. SEE SHEET NO. 1 FOR SURVEY NOTES.



US Army Corps of Engineers

 Jacksonville District

 SAFETY ON THIS JOB

 DEPENDS ON YOU

DEPARTMENT OF THE ARMY

 JACKSONVILLE DISTRICT, CORPS OF ENGINEERS

 JACKSONVILLE, FLORIDA

Designed by: **WRM**

 Checked by: **GHR**

 Drawn by: **WRM**

 Date: **MAY 2020**

 Project: **20-187-000**

 Title: **3rd QUARTER EXAM SURVEY FY20**

 Station: **30, 34, 38, 40 & 42-FOOT PROJECT**

 Reference: **20-187-000**

JACKSONVILLE HARBOR, FLORIDA

3rd QUARTER EXAM SURVEY FY20

30, 34, 38, 40 & 42-FOOT PROJECT

PLAN

 STA. 210+00 THRU STA. 240+00 BAR CUT-3

Scale: AS SHOWN

 Drawing no.

5 / 38

 SHEET 09 OF 57

MAP LABEL	AIDS TO NAVIGATION	PLANE COORDINATES		LATITUDE	LONGITUDE
		X	Y		
R/G	R/G LT, BUOY (0620)	531.707	2,205.236	30°23'56.22"	81°23'41.20"

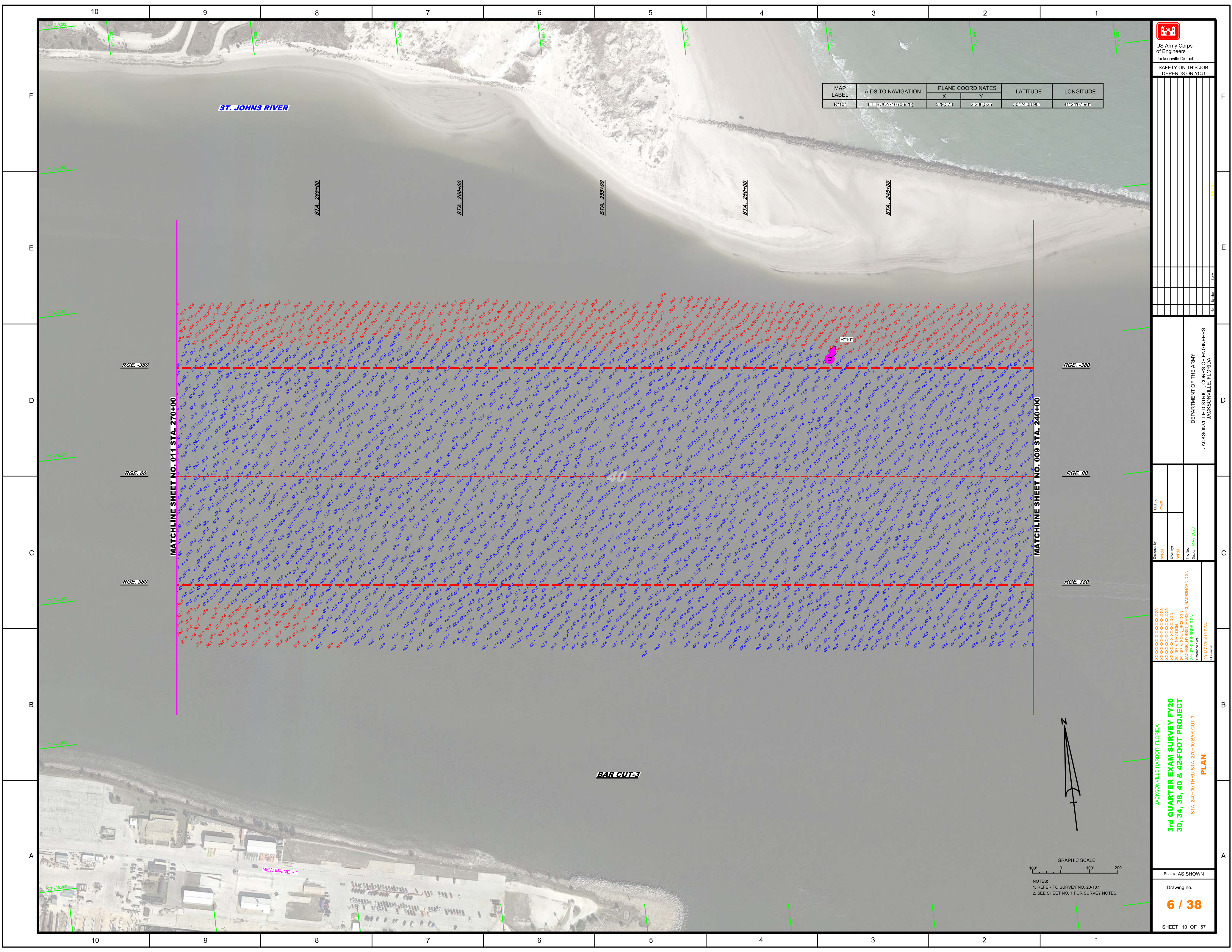
GRAPHIC SCALE

 100' 0 100 200'

 NOTES:

 1. REFER TO SURVEY NO. 20-187,

 2. SEE SHEET NO. 1 FOR SURVEY NOTES.

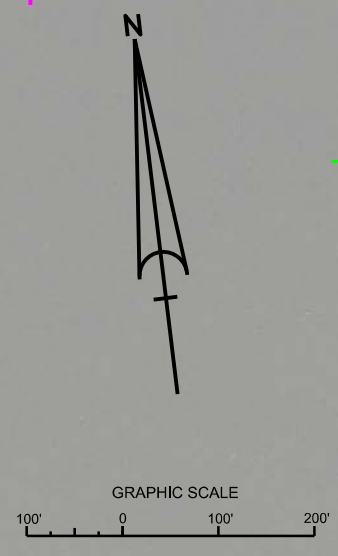


MAP LABEL	AIDS TO NAVIGATION	PLANE COORDINATES		LATITUDE	LONGITUDE
		X	Y		
R-10"	LT. BUOY-10 (06/20)	529,373	2,206,525	30°24'08.90"	81°24'07.80"

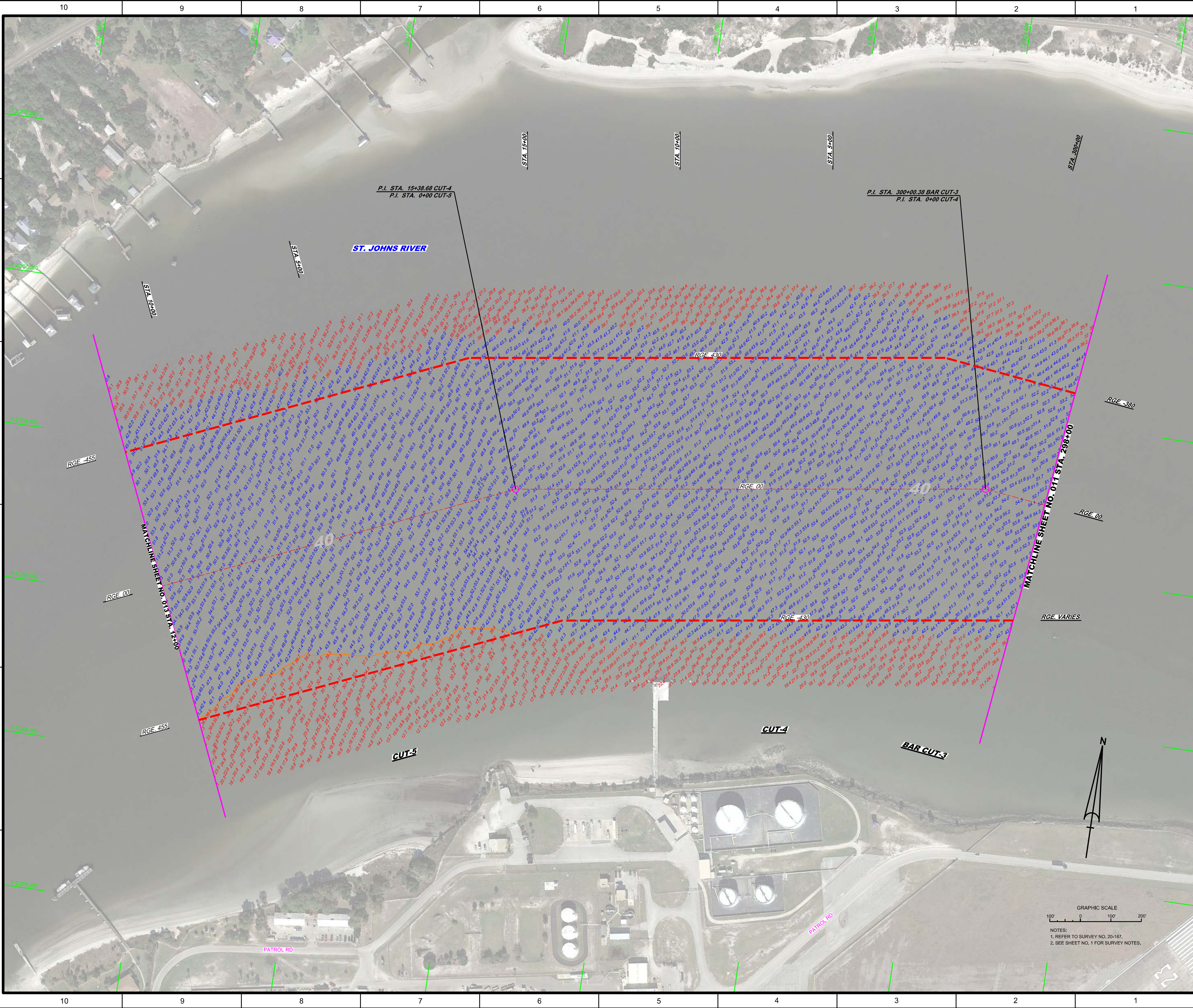
 US Army Corps of Engineers Jacksonville District SAFETY ON THIS JOB DEPENDS ON YOU	
10 9 8 7 6 5 4 3 2 1	F E D C B A
DEPARTMENT OF THE ARMY JACKSONVILLE DISTRICT, CORPS OF ENGINEERS JACKSONVILLE, FLORIDA	

10 9 8 7 6 5 4 3 2 1	F E D C B A
30, 34, 38, 40 & 42-FOOT PROJECT STA. 240+00 THRU STA. 270+00 BAR CUT-3	PLAN

10 9 8 7 6 5 4 3 2 1	F E D C B A
JACKSONVILLE HARBOR, FLORIDA 3rd QUARTER EXAM SURVEY FY20 30, 34, 38, 40 & 42-FOOT PROJECT STA. 240+00 THRU STA. 270+00 BAR CUT-3 PLAN	
Scale: AS SHOWN Drawing no. 6 / 38	
SHEET 10 OF 57	



NOTES:
1. REFER TO SURVEY NO. 20-187.
2. SEE SHEET NO. 1 FOR SURVEY NOTES.



US Army Corps of Engineers
Jacksonville District

SAFETY ON THIS JOB DEPENDS ON YOU

XXXXXXXXXXXXXXXXXXXX
 20-187A-SOON-CALDON
 20-187A-SOON-CALDON
 JAWNER, TYRRELL MARCOIS, NA0038WARDON
 20-187A-SB-BRIDLEDON
 Reference: 187-187A-101-DON

Checked by: GHR
 Designated by: WRM
 Drawn by: WRM
 File No.: 187A-SB-BRIDLEDON
 Date: MAY 2020

DEPARTMENT OF THE ARMY
 JACKSONVILLE DISTRICT, CORPS OF ENGINEERS
 JACKSONVILLE, FLORIDA

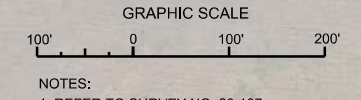
3rd QUARTER EXAM SURVEY FY20
 30, 34, 38, 40 & 42-FOOT PROJECT
 STA. 298+00 BAR CUT-3 THRU STA. 12+00 CUT-5
PLAN

JACKSONVILLE HARBOR, FLORIDA

Scale: AS SHOWN

Drawing No. **8 / 38**

SHEET 12 OF 57



MATCHLINE SHEET NO. 12-22-200

MATCHLINE SHEET NO. 071 STA. 298+00

STA. 71+00

STA. 54+00

STA. 15+00

STA. 10+00

STA. 5+00

STA. 300+00

P.I. STA. 15+38.68 CUT-4
 P.I. STA. 0+00 CUT-5

P.I. STA. 300+00.38 BAR CUT-3
 P.I. STA. 0+00 CUT-4

ST. JOHNS RIVER

CUT-4

BAR CUT-3

PATROL RD

CUT-5

RGE VARIES

RGE 00

RGE 380

RGE 455

RGE 00

RGE 455

Y 2,207,500

Y 2,207,000

Y 2,206,500

Y 2,206,000

Y 2,205,500

Y 2,205,000

10

9

8

7

6

5

4

3

2

1

F

E

D

C

B

A

F

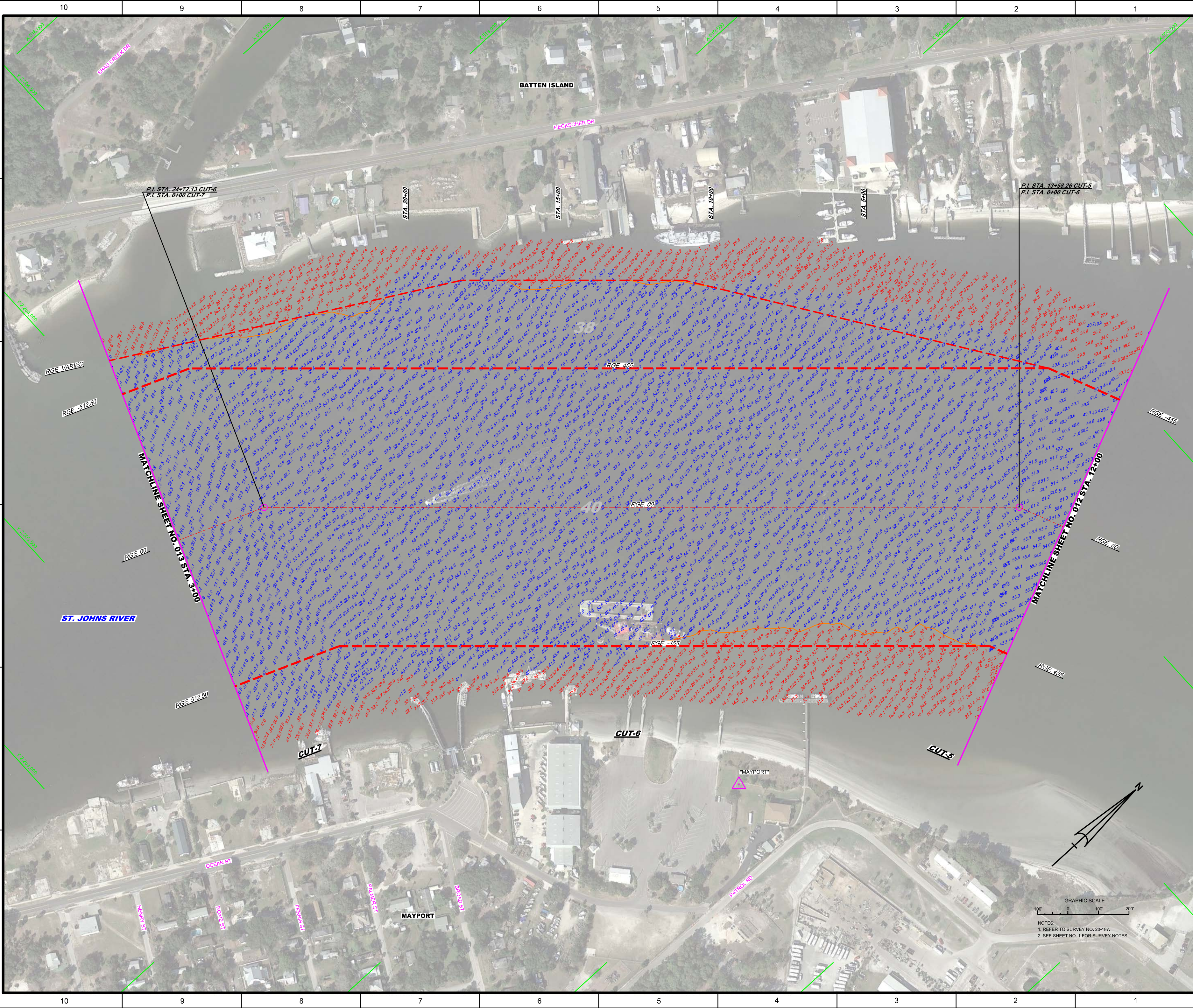
E

D

C

B

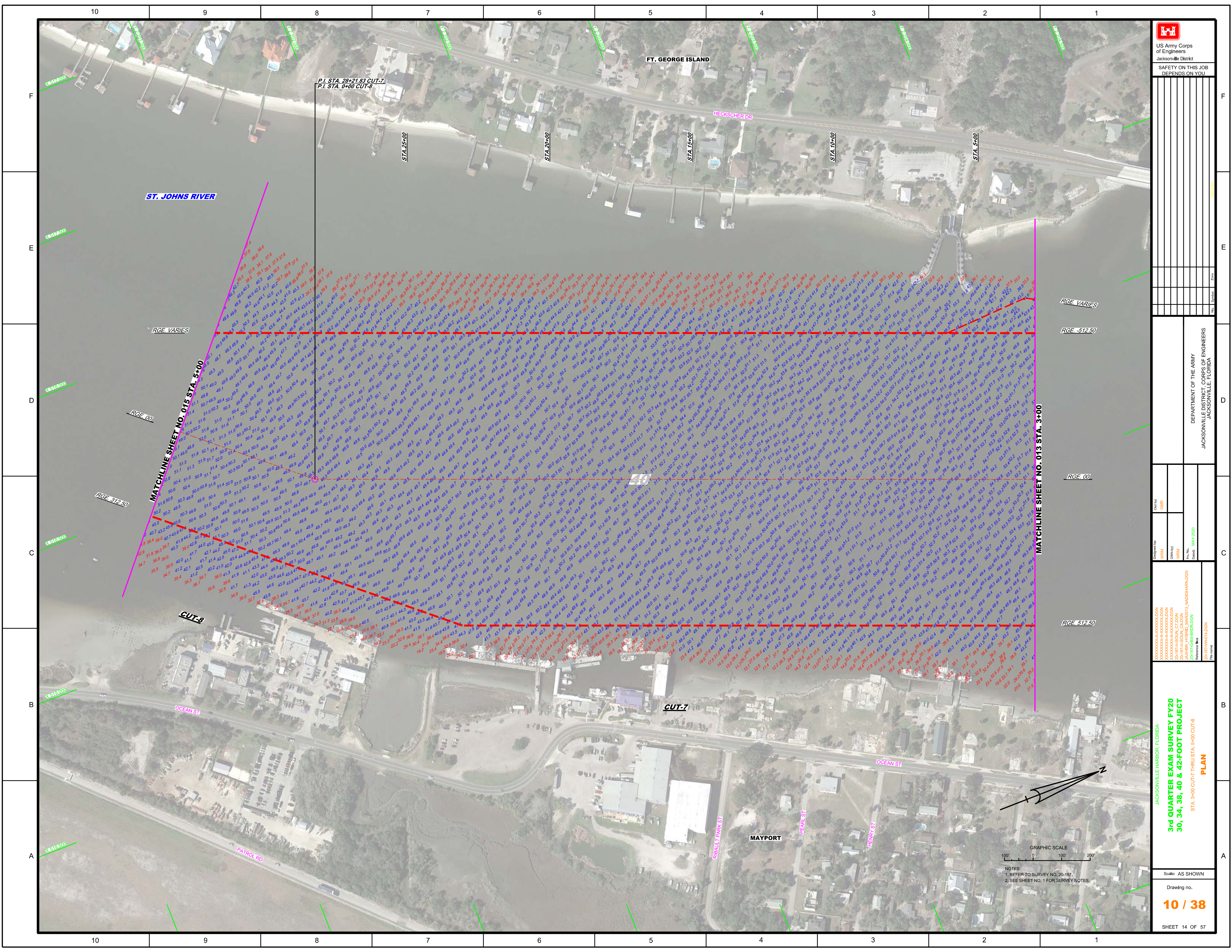
A




<p>US Army Corps of Engineers Jacksonville District</p>	
<p>SAFETY ON THIS JOB DEPENDS ON YOU</p>	
<p>DEPARTMENT OF THE ARMY JACKSONVILLE DISTRICT, CORPS OF ENGINEERS JACKSONVILLE, FLORIDA</p>	
<p>Designed by: WRM</p>	<p>Checked by: GHR</p>
<p>Drawn by: WRM</p>	<p>Date: MAY 2020</p>
<p>2018PA-CONSIDRON 2018PA-SOUL_CADRON 2018PA-SOUL_CADRON JAWBR (YPRD) JAW2013 JAW03HARDON 2018TGS-BIRDSON Reference: 13C-187-PA-010-DGN</p>	
<p>JACKSONVILLE HARBOR, FLORIDA 3rd QUARTER EXAM SURVEY FY20 30, 34, 38, 40 & 42-FOOT PROJECT STA. 12+00 CUT-5 THRU STA. 3+00 CUT-7 PLAN</p>	
<p>Scale: AS SHOWN</p>	
<p>Drawing no. 9 / 38</p>	
<p>SHEET 13 OF 57</p>	

GRAPHIC SCALE
100' 0 100' 200'

NOTES:
1. REFER TO SURVEY NO. 20-187.
2. SEE SHEET NO. 1 FOR SURVEY NOTES.




 US Army Corps of Engineers
 Jacksonville District
 SAFETY ON THIS JOB
 DEPENDS ON YOU

DEPARTMENT OF THE ARMY
 JACKSONVILLE DISTRICT, CORPS OF ENGINEERS
 JACKSONVILLE, FLORIDA

Drawn by: **WRM**
 Checked by: **WRM**
 Date: **MAY 2020**
 Project: **30-34-38-40 & 42-FOOT PROJECT**
 Station: **STA. 3+00 CUT-7 THRU STA. 5+00 CUT-8**

JACKSONVILLE HARBOR, FLORIDA
3rd QUARTER EXAM SURVEY FY20
30, 34, 38, 40 & 42-FOOT PROJECT
PLAN
 Scale: AS SHOWN
 Drawing No. **10 / 38**
 SHEET 14 OF 57

GRAPHIC SCALE
 100' 0' 100' 200'
 NOTES:
 1. REFER TO SURVEY NO. 20-187.
 2. SEE SHEET NO. 1 FOR SURVEY NOTES.